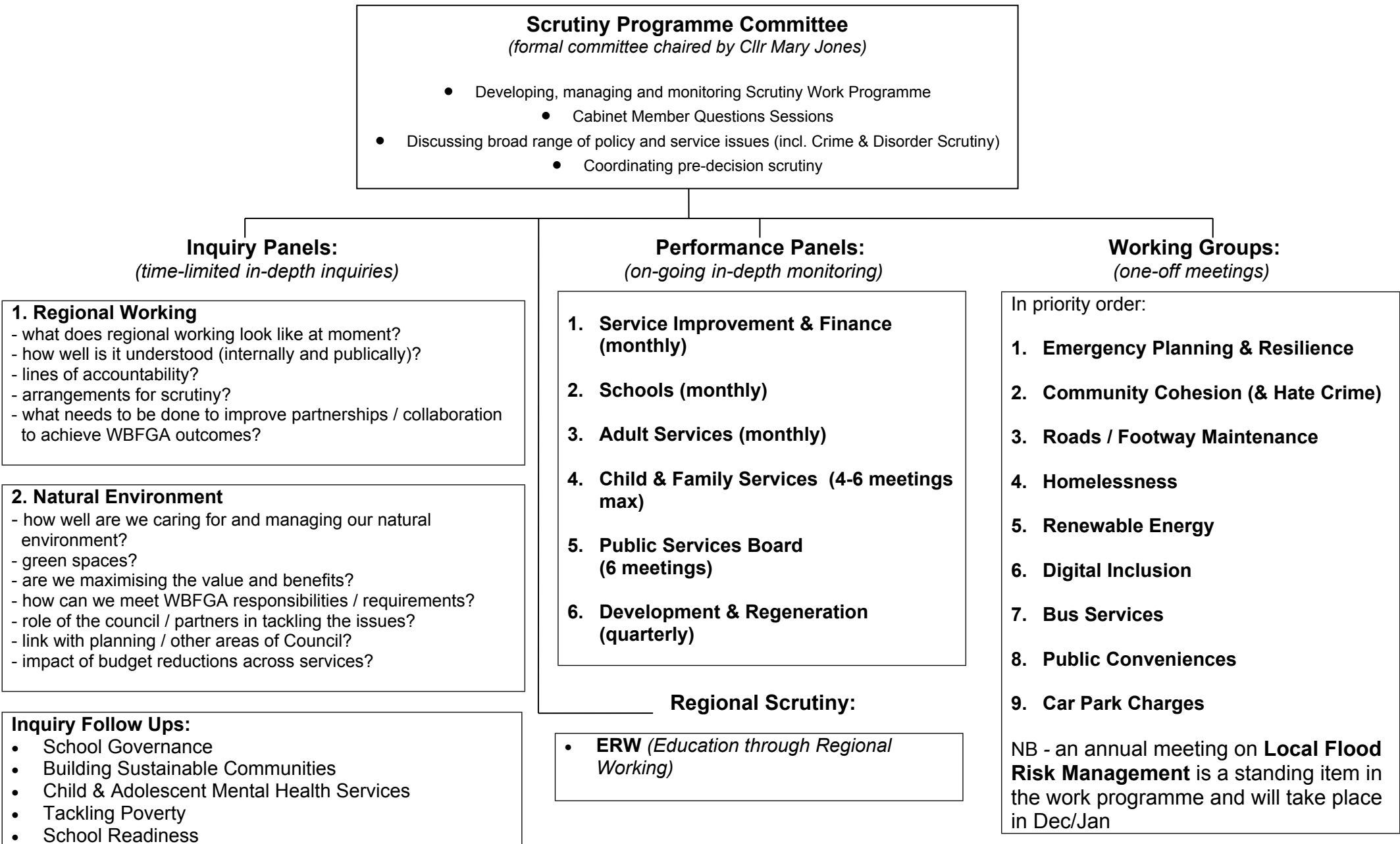


# APPENDIX 3: PROPOSED DRAFT Scrutiny Work Programme 2017/2018



**Scrutiny Programme Committee**  
(formal committee chaired by Cllr Mary Jones)

- Developing, managing and monitoring Scrutiny Work Programme
  - Cabinet Member Questions Sessions
- Discussing broad range of policy and service issues (incl. Crime & Disorder Scrutiny)
  - Coordinating pre-decision scrutiny

**Inquiry Panels:**  
(time-limited in-depth inquiries)

**1. Regional Working**  
 - what does regional working look like at moment?  
 - how well is it understood (internally and publically)?  
 - lines of accountability?  
 - arrangements for scrutiny?  
 - what needs to be done to improve partnerships / collaboration to achieve WBFGA outcomes?

**2. Natural Environment**  
 - how well are we caring for and managing our natural environment?  
 - green spaces?  
 - are we maximising the value and benefits?  
 - how can we meet WBFGA responsibilities / requirements?  
 - role of the council / partners in tackling the issues?  
 - link with planning / other areas of Council?  
 - impact of budget reductions across services?

**Inquiry Follow Ups:**

- School Governance
- Building Sustainable Communities
- Child & Adolescent Mental Health Services
- Tackling Poverty
- School Readiness

**Performance Panels:**  
(on-going in-depth monitoring)

- 1. Service Improvement & Finance (monthly)**
- 2. Schools (monthly)**
- 3. Adult Services (monthly)**
- 4. Child & Family Services (4-6 meetings max)**
- 5. Public Services Board (6 meetings)**
- 6. Development & Regeneration (quarterly)**

**Regional Scrutiny:**

- **ERW** (Education through Regional Working)

**Working Groups:**  
(one-off meetings)

- In priority order:
- 1. Emergency Planning & Resilience**
  - 2. Community Cohesion (& Hate Crime)**
  - 3. Roads / Footway Maintenance**
  - 4. Homelessness**
  - 5. Renewable Energy**
  - 6. Digital Inclusion**
  - 7. Bus Services**
  - 8. Public Conveniences**
  - 9. Car Park Charges**
- NB - an annual meeting on **Local Flood Risk Management** is a standing item in the work programme and will take place in Dec/Jan